

OT CONSOLE

OT ROOM SMART SURGEON CONTROL PANEL



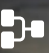






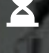

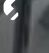


INTRODUCTION

Mshriy's Smart OT Console is a hybrid system designed to improve surgical precision, efficiency, and patient safety. The full modern operating theatre is simple to operate and monitor, boosting throughput and promoting better outcomes for surgical teams.

Operation Theatre Control Panel is Important to Monitor, Control, CAU on and Data in the Advanced Medical Clinic Working Theatre. The Module is Customized with 36IO Input Output. Theatre or Surgeons Control Panels Combine the Controls of an Operation Theatre In the Single Interface Panel Comprising such a Lighting, Temperature, Humidity and Room Pressure, Ventilation and Critical Alarms. They Provide Clinical Teams with a Simple and Intuitive Method of Monitoring and Controlling the Entire Theatre Environment at the Touch of a Fingertip. MSHRIY a Special Application on Oriented Pre- Programmed or Customize Program Controller.



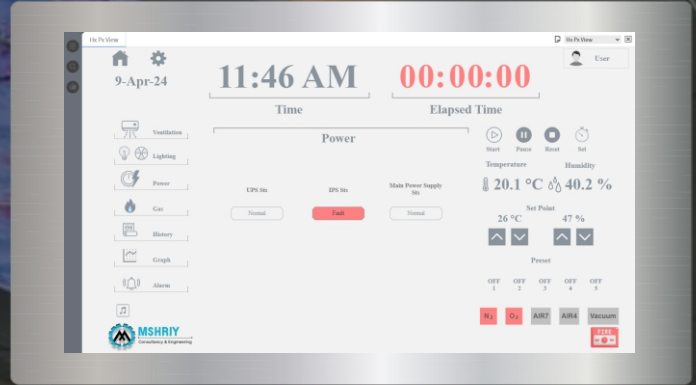
FEATURES

-  Pre-programmed for easy installation
-  Air conditioning control / Easy HVAC integration
-  Various standard protocols to integrate and communicate with various systems
-  OT light control / General light control system with dimming illumination of light
-  Alarms - Real-time alarms and historical alarms
-  Reporting functionality
-  Cloud connectivity
-  Easy to connect from mobile, tablets, PC, Laptops
-  Monitoring of complete medical gas system
-  Real time clock / Elapsed time / Anesthesia countdown time features
-  Electrical power monitoring Raw power + UPS power
-  Telephonic compatibility
-  Music mp3 player
-  Nurse/Doctor calling System



Display System

- High-resolution display offers crystal-clear visualization of surgical images and data.
- Size and orientation: Typically, large enough for easy viewing from various angles within the operating room.
- Capacitive Touchscreen interface: Intuitive control for easy navigation and adjustment of settings during surgery available display size option 10"-12"-15"-21"-24" up to 65"



Integration with Imaging Systems

- Compatible with diverse imaging modalities like X-ray, MRI, CT, and ultrasound. Real-time display of imaging data provides invaluable guidance during procedures.
- Seamless integration with imaging equipment streamlines workflow and data transfer.
- Interface compatibility with a wide range of surgical instruments and devices for seamless integration and control.

HVAC Control Interface

- Sterile controls or touch-less gestures prevent contamination in the operating room.
- Customizable layouts cater to surgeon preferences and procedural requirements.
- HEATING, VENTILATION & AIRCONIDITING CONTROL WITH BMS.
- Ergonomic design ensures comfortable and efficient operation during surgery.



Regular Compliance

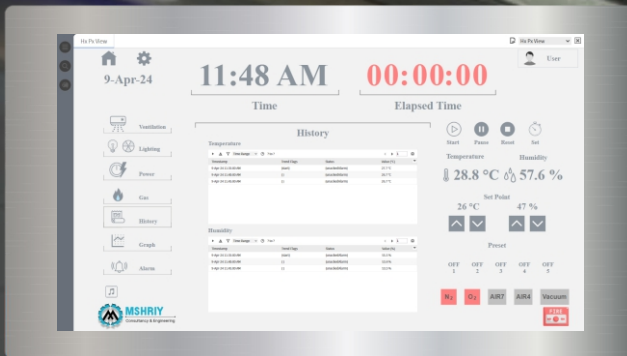
- Compliance with relevant medical regulations and standards to ensure safety, efficacy, and quality of the surgeon panel system.
- Regular updates and upgrades to incorporate new features, address security vulnerabilities, and maintain compliance with evolving regulations. Encompass the technical, operational, and regulatory aspects of an OT surgeon panel, ensuring optimal performance and safety in the operating room environment.

Data Management

- Secure storage and retrieval of patient information, surgical images, and procedural data.
- Compliance with data security regulations safeguards patient confidentiality.
- Integration with hospital information systems facilitates seamless access to patient records and preoperative planning data.

Video Recording and Playback

- Capability to record surgical procedures in high definition for documentation, analysis, or educational purposes.
- Playback functionality with options for annotation, zooming, and frame-by-frame review.
- Integration with hospital archiving systems for long-term storage and retrieval of surgical videos.



Communication and Connectivity

- Network connectivity: Integration with hospital networks for access to electronic medical records, surgical planning software, and remote consultation.
- Compatibility with communication systems for intraoperative communication among surgical team members.
- System can be access remotely through mobile, tab or display devices through internet.

Hybrid control Through MSHRIY-MACBox

- Detachable MSHRIY-MACBox (Master Application Controller Box), Versatile programmable Next-gen Hybrid IoT Controller Powerful Quad-Core 1.6 GHz processor. The controller provides Built-in, control, data logging, alarm, scheduling, integration, and visualization.



Safety Features

- Built-in alarms and alerts: Prompt notification of critical events or abnormalities during surgery.
- Interlocks and safety protocols: Prevent accidental activation or misuse of surgical equipment.
- Emergency shutdown procedures: Rapid response mechanisms to ensure patient safety in case of emergencies.

ASHRAE Regulations

- ASHRAE/ASHE Standard 170-2017 provides minimum requirements for the design and layout of the ventilation systems in operating rooms which presumably can maintain a sterile environment around the surgical site.

ISHRAE Protocols

- The ISHRAE Indoor Environmental Quality Standard emphasizes the importance of IEQ in buildings, covering factors like air quality, thermal comfort, and acoustic comfort. It sets threshold values and promotes an integrated design approach for sustainable buildings in India.

Start Pause Reset Set

Temperature Humidity

20.1 °C 40.2 %

Set Point

26 °C 47 %

Presets: OFF 1, OFF 2, OFF 3, OFF 4, OFF 5

N₂ O₂ AIR7 AIR4 Vacuum

FIRE

Ventilation

Lighting

Power

Gas

History

Graph

Alarm

Music

MSHRIY
Consultancy & Engineering

COMPARISON

Features	MCE-OTC-MAC	MCE-OTC-MACPro	MCE-OTC-MACIoT
Inputs/Outputs	16 UI, 4 DI, 8 DO, 8 AO		
Controller Type	Programmable		
Processor	Quad-Core 1.6 Ghz		
Memory	2 GB RAM, 8 GB micro SD		
Interfaces	Ethernet, USB, HDMI, Rs485	Ethernet, USB, HDMI, Rs485	Ethernet, USB, Rs485
Protocols Supported	BACnet, Modbus, KNX, M-Bus, MQTT, SNMP, etc.		
Power Supply	24 V AC/DC		
Visualization	HDMI-operated local visualization	HDMI-operated local visualization	N/A
Mounting	DIN Rail		

Product Barcodes

Product Display	OTC-MACBox	OTC-MACBoxPro	OTC-MACBoxIoT
15"	MCE-OTC-MB15	MCE-OTC-MBP15	MCE-OTC-MBI15
21"	MCE-OTC-MB21	MCE-OTC-MBP21	MCE-OTC-MBI21
24"	MCE-OTC-MB24	MCE-OTC-MBP24	MCE-OTC-MBI24
32"	MCE-OTC-MB32	MCE-OTC-MBP32	MCE-OTC-MBI32
55"	MCE-OTC-MB55	MCE-OTC-MBP55	MCE-OTC-MBI55
65"	MCE-OTC-MB65	MCE-OTC-MBP65	MCE-OTC-MBI65



MSHRIY
Consulting & Engineering

Contact Us For Query

Email address: info@mshriy.com
For Sales Query: sales@mshriy.com

Address

Sales Office: MSHRIY C&E, Shakti Logistick park, Shed No. 8, Near ABB Material Gate no. 5, makarpura GIDC, Vadodara-390013.

Factory-2: MSHRIY Consulting & Engineering L-26/1 G.I.D.C., Por, Ta. Ramangamdi , Vadodara-391243

MCE/08/24/MACOT

All specifications are subject to change without notice or obligation to earlier customers; nevertheless, the information and specifications given here are current as of the date of publishing. MSHRIY: Consulting & Engineering has the right to alter or amend specifications without previous notification. Contact us for the most up-to-date product specifications. Graphics for representation only. It will vary as per user requirement.